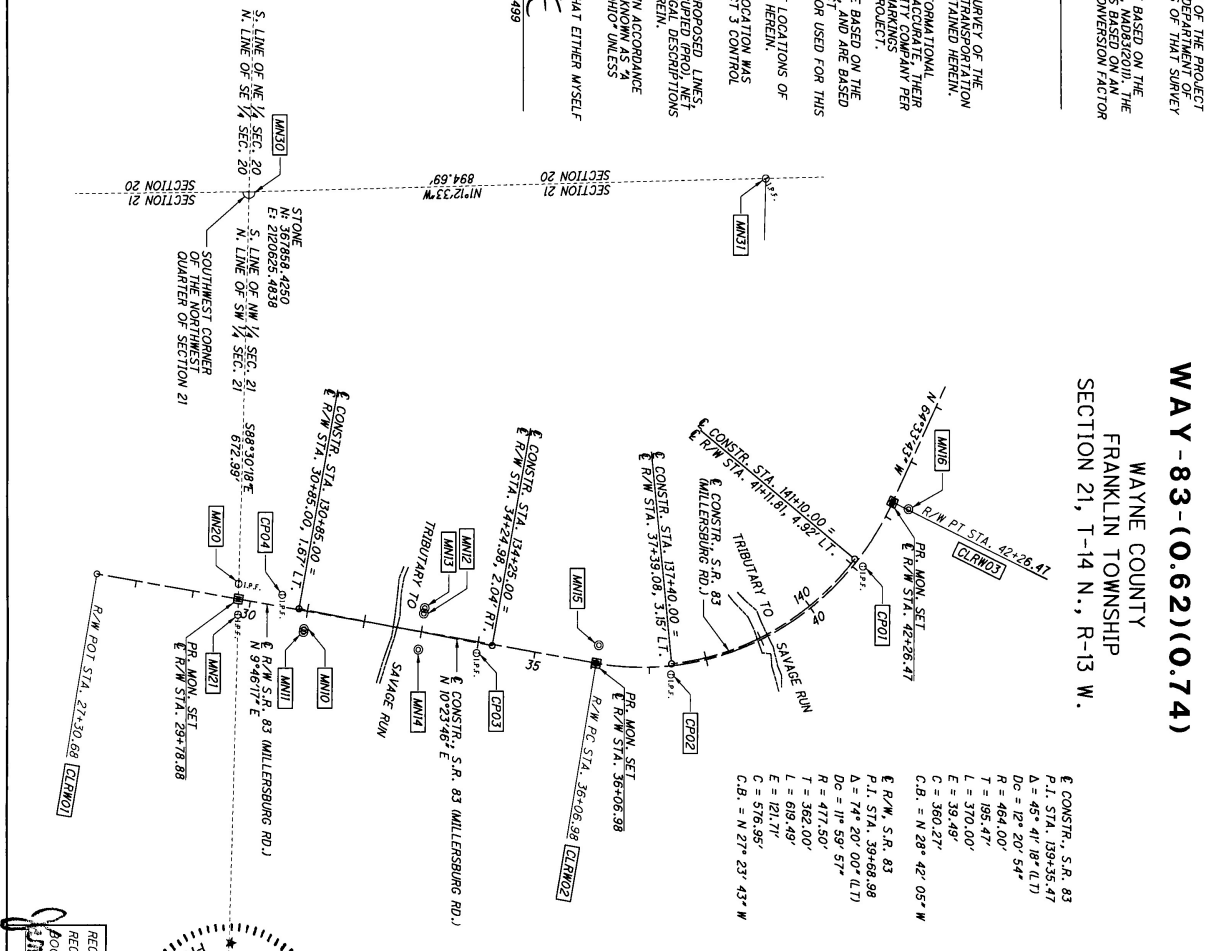


I, JONATHAN KELLER, P.S., HAVE CONDUCTED A SURVEY OF THE PROJECT CONTROL AND EXISTING RIGHT-OF-WAY FOR THE OHIO DEPARTMENT OF TRANSPORTATION ON DECEMBER 10, 2014. THE RESULTS OF THAT SURVEY ARE CONTAINED HEREIN.  
THE HORIZONTAL COORDINATES EXPRESSED HEREIN ARE BASED ON THE OHIO STATE PLANE COORDINATE SYSTEM, NORTH ZONE, NAD83(2011). THE PROJECT ADJUSTMENT FACTOR (PAF) OF 1.000070 IS BASED ON ANY PAF FROM GPS SURVEYS PERFORMED IN DECEMBER 2011.  
JONATHAN KELLER, PROFESSIONAL SURVEYOR #8590  
DATE: 4/6/2016

I, JASON L. LINGENFELTER, P.S., HAVE CONDUCTED A SURVEY OF THE EXISTING CONDITIONS FOR THE OHIO DEPARTMENT OF TRANSPORTATION IN MAY 2015. THE RESULTS OF THAT SURVEY ARE CONTAINED HEREIN.  
UNDERGROUND UTILITY LOCATIONS ARE SHOWN FOR INFORMATIONAL PURPOSES ONLY. THOUGH THEY ARE BELIEVED TO BE ACCURATE, THEIR LOCATION IS AS MARKED ON THE GROUND BY THE UTILITY COMPANY PER OHS CONTRACT NUMBER 48208601 AND THOSE MARKINGS SUBSEQUENTLY BEING SWEPT AS A PART OF THIS PROJECT.  
THE HORIZONTAL COORDINATES FOR THIS PROJECT ARE BASED ON THE OHIO STATE PLANE COORDINATE SYSTEM, NORTH ZONE, AND ARE BASED ON ANY PAF FROM GPS SURVEYS PERFORMED IN DECEMBER 2011.  
AS PART OF THIS PROJECT I HAVE REESTABLISHED THE LOCATIONS OF THE EXISTING PROPERTY LINES FOR PROPERTY TAKES HEREIN.  
AS PART OF THIS PROJECT THE E OF RIGHT OF WAY LOCATION WAS DELINEATED WHERE PROVIDED ON DECEMBER 19, 2014.  
AS PART OF THIS PROJECT I HAVE ESTABLISHED THE PROPOSED LINES, CALCULATED THE CROSS SECTIONS AND PREPARED THE LEGAL DESCRIPTIONS NECESSARY TO ACQUIRE THESE PARCELS AS SHOWN HEREIN.  
ALL OF MY WORK CONTAINED HEREIN WAS CONDUCTED IN ACCORDANCE WITH OHIO ADMINISTRATIVE CODE 4733-31 COMMUNITY MAPWORK AS A MINIMUM FOR BOUNDARY SURVEYS IN THE STATE OF OHIO UNLESS NOTED.  
THE WORDS I AND MY AS USED HEREIN ARE TO MEAN THAT EITHER MYSELF OR SOMEONE WORKING UNDER MY DIRECT SUPERVISION.

JASON L. LINGENFELTER, PROFESSIONAL SURVEYOR #9499  
DATE: 3-16-18

- MONUMENT LEGEND
- EXISTING R/W MONUMENT BOX
- PROPOSED R/W MONUMENT BOX
- EXISTING CONCRETE MONUMENT
- PROPOSED CONCRETE MONUMENT
- RAILROAD SPIKE FOUND
- RAILROAD SPIKE SET
- IRON PIN FOUND
- IRON PIN FOUND W/ ID CAP
- IRON PIN SET W/ ID CAP
- IRON PIPE FOUND
- IRON PIPE SET
- P.K. NAIL SET



WAYNE COUNTY  
FRANKLIN TOWNSHIP  
SECTION 21, T-14 N., R-13 W.

WAY - 83 - (0.62)(0.74)

Table with curve data for the main road:

CONSTR. S.R. 83	P.I. STA. 139+35.47
	D = 45° 41' 18" (LT)
	Dc = 12° 20' 54"
	R = 464.00'
	T = 195.47'
	L = 370.00'
	E = 38.48'
	C = 360.27'
	C.B. = N 28° 42' 05" W

Table with curve data for the tributary road:

R/W S.R. 83	P.I. STA. 39+68.98
	D = 17° 20' 00" (LT)
	Dc = 11° 59' 57"
	R = 477.50'
	T = 362.00'
	L = 618.49'
	E = 121.71'
	C = 576.95'
	C.B. = N 27° 23' 43" W

RECEIVED 4.11.16 20:24  
BOOK 84 P. 423  
JONATHAN KELLER  
COUNTY RECORDER



SIGNED: JK  
DATE: 4/12/16

SIGNED: J.L.L.  
DATE: 3/16/18

WAY - 83 - (0.62)(0.74)

CENTERLINE PLAT

Scale: 1" = 50' HORIZONTAL SCALE IN FEET

DESIGNER: CUS  
CHECKER: JUL

PID NO. 88886

42/47

WAY-83-(0.62)(0.74)

WAY-83-(0.62)(0.74)  
WAYNE TOWNSHIP  
FRANKLIN TOWNSHIP  
SECTION 21, T-14 N., R-13 W.

PID: 88886

R/W DESIGNER  
PID NO.  
R/W REVIEWER  
88886

PROJECT GROUND COORDINATES - US SURVEY FEET  
PROJECT COORDINATES (FEET) ARE RELATIVE TO STATE PLANE GRID COORDINATES (MERCATOR)  
BY A PROJECT ADJUSTMENT FACTOR (GAF) MULTIPLIER OF: 3.2807644  
S.H. (I.C.H.) 342, SEC. B, WAYNE COUNTY R/W PLAN\*

NAME	STATION	OFFSET (FT)	LT/RT	NORTH (FT)	EAST (FT)	ELEVATION (FT)	FEATURE
BM01	31+50.00	55.00	RT	36800.00	212181.4910	863.55	IP/D
BM02	31+50.00	55.00	RT	36800.00	212181.4910	863.55	IP/D
BM03	31+50.00	55.00	RT	36800.00	212181.4910	863.55	IP/D
BM04	31+50.00	55.00	RT	36800.00	212181.4910	863.55	IP/D
BM05	31+50.00	55.00	RT	36800.00	212181.4910	863.55	IP/D
BM06	31+50.00	55.00	RT	36800.00	212181.4910	863.55	IP/D
BM07	31+50.00	55.00	RT	36800.00	212181.4910	863.55	IP/D
BM08	31+50.00	55.00	RT	36800.00	212181.4910	863.55	IP/D
BM09	31+50.00	55.00	RT	36800.00	212181.4910	863.55	IP/D
BM10	31+50.00	55.00	RT	36800.00	212181.4910	863.55	IP/D

EXISTING MONUMENTAL CENTERLINE OF RIGHT-OF-WAY STATE ROUTE 083  
PROJECT COORDINATES (FEET) ARE RELATIVE TO STATE PLANE GRID COORDINATES (MERCATOR)  
BY A PROJECT ADJUSTMENT FACTOR (GAF) MULTIPLIER OF: 3.2807644  
S.H. (I.C.H.) 342, SEC. B, WAYNE COUNTY R/W PLAN\*

NAME	STATION	OFFSET (FT)	LT/RT	NORTH (FT)	EAST (FT)	ELEVATION (FT)	FEATURE
BM01	31+50.00	55.00	RT	36800.00	212181.4910	863.55	IP/D
BM02	31+50.00	55.00	RT	36800.00	212181.4910	863.55	IP/D
BM03	31+50.00	55.00	RT	36800.00	212181.4910	863.55	IP/D
BM04	31+50.00	55.00	RT	36800.00	212181.4910	863.55	IP/D
BM05	31+50.00	55.00	RT	36800.00	212181.4910	863.55	IP/D
BM06	31+50.00	55.00	RT	36800.00	212181.4910	863.55	IP/D
BM07	31+50.00	55.00	RT	36800.00	212181.4910	863.55	IP/D
BM08	31+50.00	55.00	RT	36800.00	212181.4910	863.55	IP/D
BM09	31+50.00	55.00	RT	36800.00	212181.4910	863.55	IP/D
BM10	31+50.00	55.00	RT	36800.00	212181.4910	863.55	IP/D

PROJECT ADJUSTMENT FACTOR BASED ON INVERSE OF THE SCALE FACTOR.  
UNLESS FACTOR = 1.00007844 STATE PLANE GRID COORDINATES (MERCATOR)  
PROJECT ADJUSTMENT FACTOR = 3.2807644 STATE PLANE GRID COORDINATES (MERCATOR)  
PROJECT COORDINATES ARE SCALED FROM GRID COORDINATES ABOUT THE OHIO NORTH ZONE GRID POINT N-0-E-0

NAME	STATION	OFFSET (FT)	LT/RT	NORTH (FT)	EAST (FT)	ELEVATION (FT)	FEATURE
BM01	31+50.00	55.00	RT	36800.00	212181.4910	863.55	IP/D
BM02	31+50.00	55.00	RT	36800.00	212181.4910	863.55	IP/D
BM03	31+50.00	55.00	RT	36800.00	212181.4910	863.55	IP/D
BM04	31+50.00	55.00	RT	36800.00	212181.4910	863.55	IP/D
BM05	31+50.00	55.00	RT	36800.00	212181.4910	863.55	IP/D
BM06	31+50.00	55.00	RT	36800.00	212181.4910	863.55	IP/D
BM07	31+50.00	55.00	RT	36800.00	212181.4910	863.55	IP/D
BM08	31+50.00	55.00	RT	36800.00	212181.4910	863.55	IP/D
BM09	31+50.00	55.00	RT	36800.00	212181.4910	863.55	IP/D
BM10	31+50.00	55.00	RT	36800.00	212181.4910	863.55	IP/D

PROPOSED RIGHT OF WAY MONUMENTS  
THE PROJECT ADJUSTMENT FACTOR FOR THE PROJECT WAS COMPUTED BY TAKING THE INVERSE OF THE TBC-GENERATED COMBINED SCALE FACTOR FOR: CP03  
HORIZONTAL CONTROL WAS POSITIONED WITH A MINIMUM OF 5 VNS-DERIVED GNSS OBSERVATIONS. VERTICAL CONTROL WAS ESTABLISHED BY  
DIFFERENTIAL LEVELING. ALL POSITIONS ARE IN CONFORMANCE TO THE ODOT SURVEYING AND MAPPING SPECIFICATIONS.

NAME	STATION	OFFSET (FT)	LT/RT	NORTH (FT)	EAST (FT)	ELEVATION (FT)	FEATURE
BM01	31+50.00	55.00	RT	36800.00	212181.4910	863.55	IP/D
BM02	31+50.00	55.00	RT	36800.00	212181.4910	863.55	IP/D
BM03	31+50.00	55.00	RT	36800.00	212181.4910	863.55	IP/D
BM04	31+50.00	55.00	RT	36800.00	212181.4910	863.55	IP/D
BM05	31+50.00	55.00	RT	36800.00	212181.4910	863.55	IP/D
BM06	31+50.00	55.00	RT	36800.00	212181.4910	863.55	IP/D
BM07	31+50.00	55.00	RT	36800.00	212181.4910	863.55	IP/D
BM08	31+50.00	55.00	RT	36800.00	212181.4910	863.55	IP/D
BM09	31+50.00	55.00	RT	36800.00	212181.4910	863.55	IP/D
BM10	31+50.00	55.00	RT	36800.00	212181.4910	863.55	IP/D

STATE PLANNED GRID COORDINATES  
HORIZONTAL DATUM - MAD83Z0101, OHIO NORTH ZONE (3401)  
VERTICAL DATUM - NAVD83

NAME	NORTH (M)	EAST (M)	ORTHO HT (M)	NORTH (US FT)	EAST (US FT)
BM01	11259.3549	646550.4923	38797.2021	212181.4910	3083.3083
BM02	11259.3549	646550.4923	38797.2021	212181.4910	3083.3083
BM03	11259.3549	646550.4923	38797.2021	212181.4910	3083.3083
BM04	11259.3549	646550.4923	38797.2021	212181.4910	3083.3083
BM05	11259.3549	646550.4923	38797.2021	212181.4910	3083.3083
BM06	11259.3549	646550.4923	38797.2021	212181.4910	3083.3083
BM07	11259.3549	646550.4923	38797.2021	212181.4910	3083.3083
BM08	11259.3549	646550.4923	38797.2021	212181.4910	3083.3083
BM09	11259.3549	646550.4923	38797.2021	212181.4910	3083.3083
BM10	11259.3549	646550.4923	38797.2021	212181.4910	3083.3083

MONUMENTS TO BE SET DURING CONSTRUCTION  
ITEM 623E-0520  
ITEM 623E-0520  
ITEM 623E-0520  
ITEM 623E-0520

NAME	STATION	OFFSET (FT)	LT/RT	NORTH (FT)	EAST (FT)	ELEVATION (FT)	FEATURE
BM01	31+50.00	55.00	RT	36800.00	212181.4910	863.55	IP/D
BM02	31+50.00	55.00	RT	36800.00	212181.4910	863.55	IP/D
BM03	31+50.00	55.00	RT	36800.00	212181.4910	863.55	IP/D
BM04	31+50.00	55.00	RT	36800.00	212181.4910	863.55	IP/D
BM05	31+50.00	55.00	RT	36800.00	212181.4910	863.55	IP/D
BM06	31+50.00	55.00	RT	36800.00	212181.4910	863.55	IP/D
BM07	31+50.00	55.00	RT	36800.00	212181.4910	863.55	IP/D
BM08	31+50.00	55.00	RT	36800.00	212181.4910	863.55	IP/D
BM09	31+50.00	55.00	RT	36800.00	212181.4910	863.55	IP/D
BM10	31+50.00	55.00	RT	36800.00	212181.4910	863.55	IP/D

WAY-83-(0.62)(0.74)  
CENTERLINE PLAT  
43  
47

