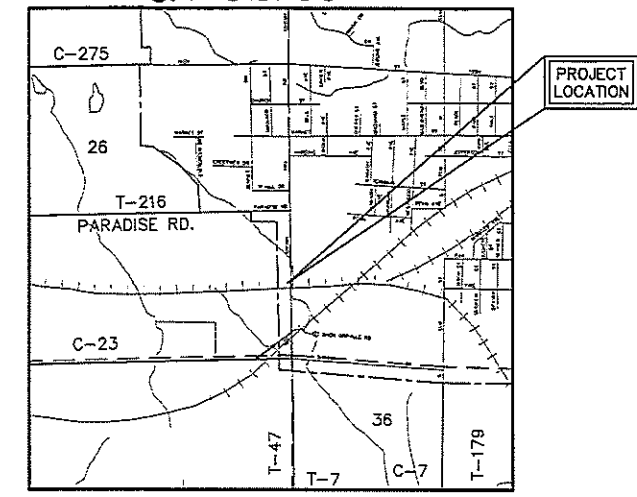


WW-062B

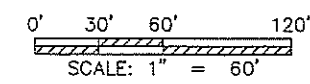
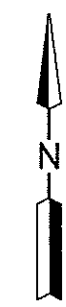
# ANDOVER CONDOMINIUMS

PHASE 5  
PART OF LOT 3682  
ANDOVER ALLOTMENT  
PLAT VOL. 29; PG. 36

CITY OF ORRVILLE  
WAYNE COUNTY, OHIO  
**ORR-GR. 36**



LOCATION MAP

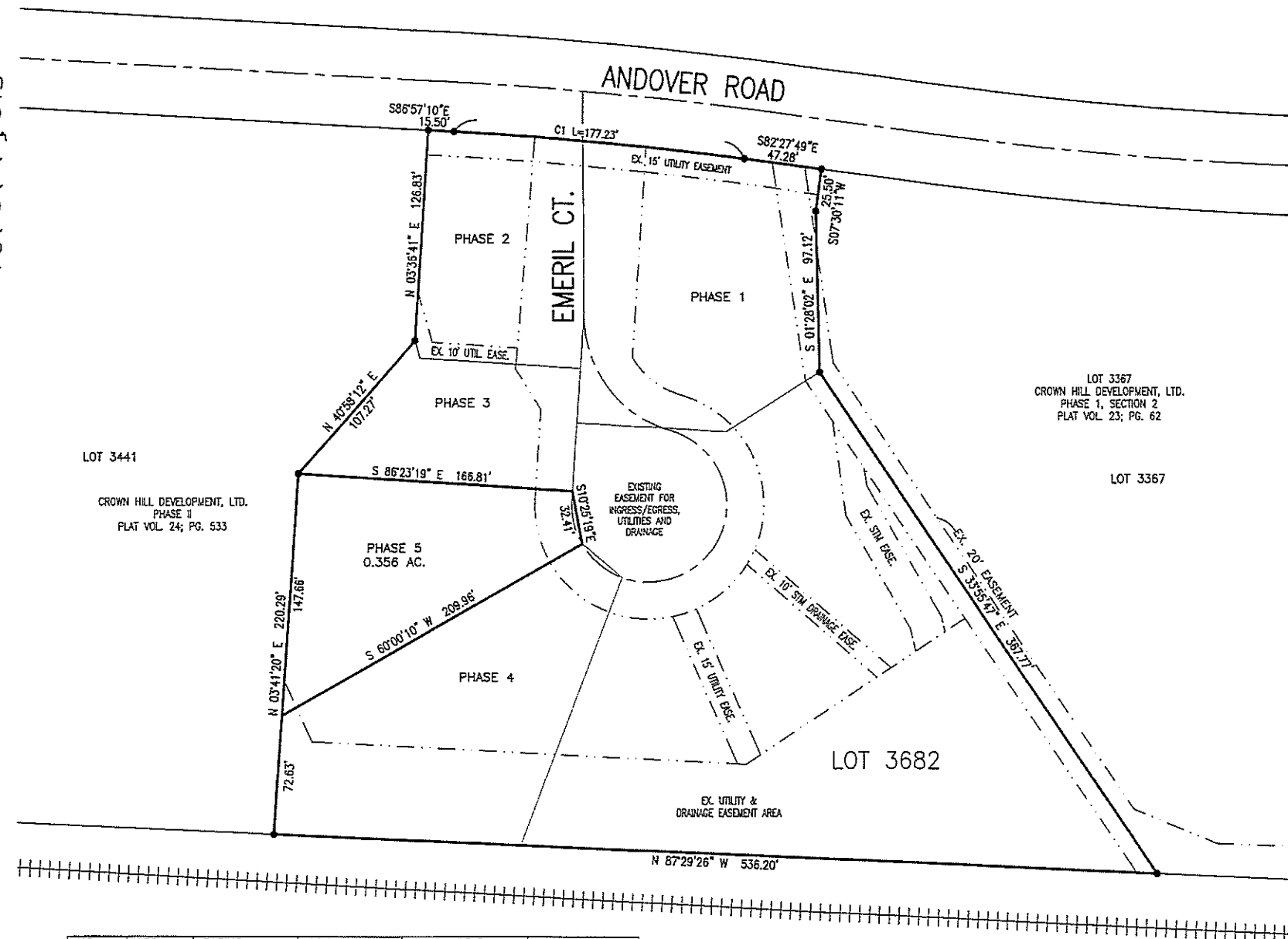


- CAPPED PIN FOUND WITH I.D. CAP MARKED SJL INC (UNLESS NOTED)

REFERENCE SURVEY & BASIS OF BEARING  
N87°29'26"W, BEING THE SOUTH LINE OF LOT 3440 AS SHOWN ON PLAT VOL. 24, PG. 533, SURVEY '00'-717, DATED AUGUST 31, 2000 BY EDWARD P. FERRIS OF E.P. FERRIS AND ASSOCIATES, INC.

Vol 31 Pg 313

# 2018-4681



NO.	ARC	RADIUS	DELTA ANGLE	CHORD BEARING	CHORD
C1	177.23'	2261.83'	04°29'20"	S 84°42'30" E	177.18'

Approved: this 30<sup>th</sup> day of April, 2018. [Signature]  
 Orrville City Safety Service Director  
 STEVE WHEELER

Approved for Recording: this 3<sup>rd</sup> day of May, 2018. [Signature]  
 Wayne County Tax Map Office  
 Michael A. Martin

Transferred: this 3<sup>rd</sup> day of MAY, 2018. [Signature]  
 Wayne County Auditor's Office  
 Ruth Huxley

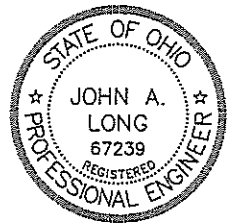
Filed for Record: this 3 day of May, 2018. [Signature]  
 Wayne County Recorder  
 JANE CARMICHAEL

# 4681 @ 2:56 in Vol. 31 Pg 313.

Rec. 120.00 pd  
\$.50 AUDITOR

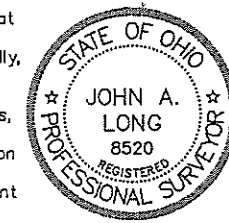
ENGINEER'S DECLARATION: I declare that this plan shows graphically, insofar as possible, the layout and dimensions of units and of the buildings.

[Signature]  
John A. Long, P.E. 67239



8/8/16  
Date

SURVEYOR'S DECLARATION: I declare that this plan was prepared from an actual survey. That the same shows graphically, insofar as possible, the location of the boundaries, the layout, location and dimensions of units and of the buildings, the location and layout of limited common areas and facilities, the location and layout of common areas and facilities, and the location of appurtenant easements, if any.



[Signature]  
John A. Long, P.S. 8520

8/8/16  
Date

**SHAFFER, JOHNSTON, LICHTENWALTER & ASSOCIATES, INC.**  
 Consulting Engineers & Surveyors  
 3477 Commerce Parkway, Suite C  
 Wooster, Ohio 44691  
 TEL (330) 345-6377 FAX (330) 345-6725 EMAIL sjl@sjl-inc.com

DRAWN C. Falb	CHECKED	SCALE 1" = 60'	DATE 08/08/16
------------------	---------	-------------------	------------------

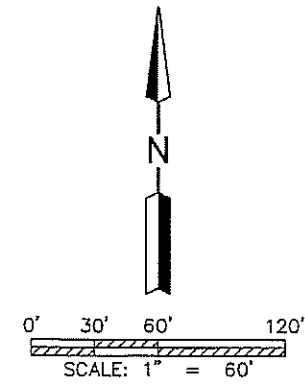
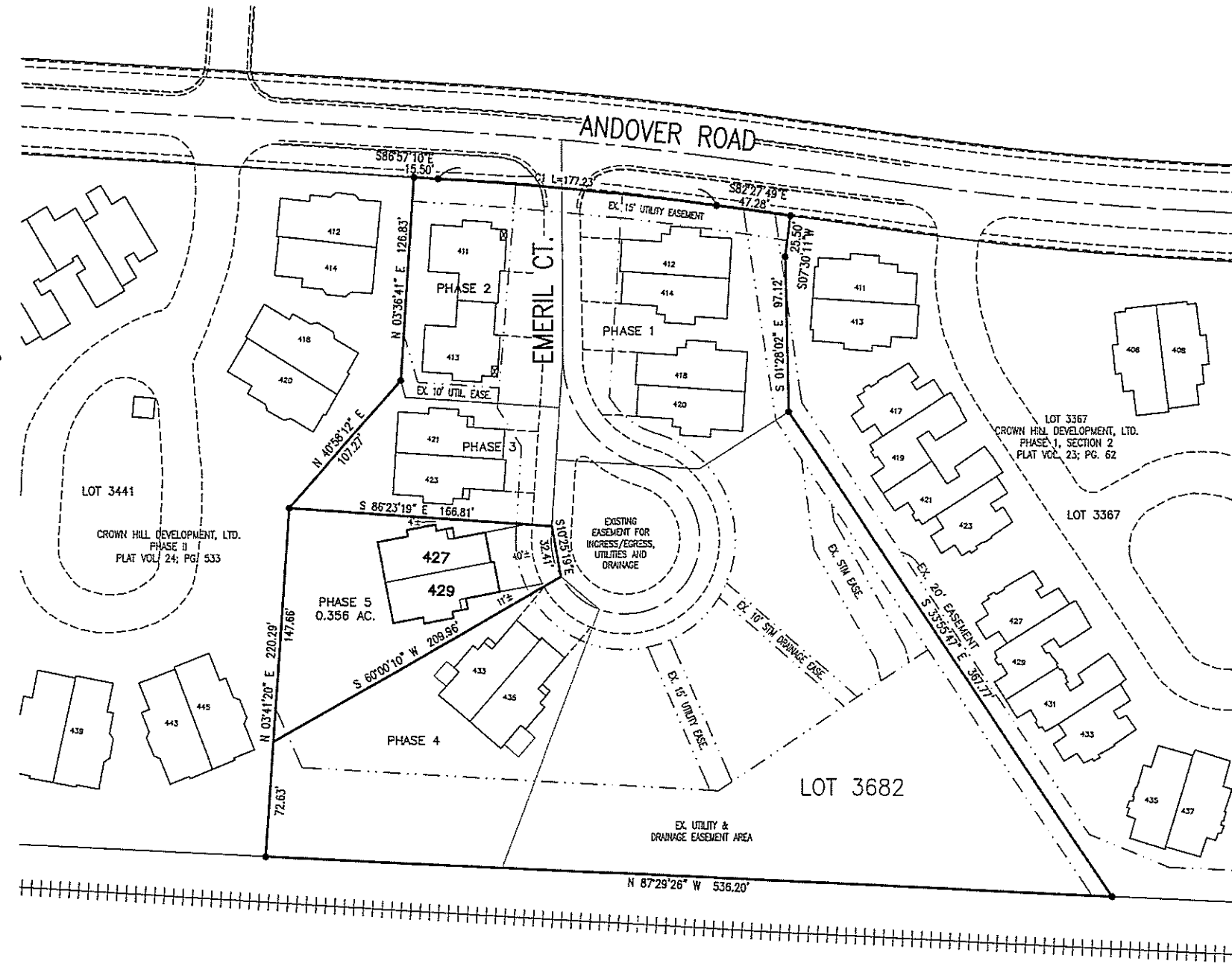
DWG NO: EW-2343AD | JOB NO: EW-2343AD | SHEET 1 OF 3

# ANDOVER CONDOMINIUMS

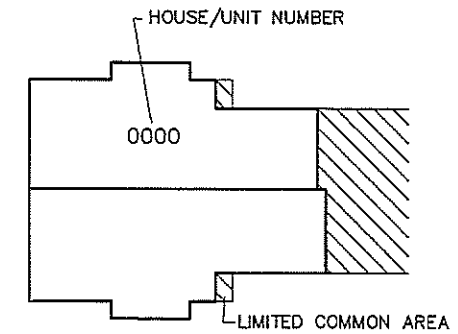
PHASE 5  
 PART OF LOT 3682  
 ANDOVER ALLOTMENT  
 PLAT VOL. 29; PG. 36  
 CITY OF ORRVILLE  
 WAYNE COUNTY, OHIO  
**ORR-CR 36**

Vol 31 Pg 314

#2018-4681



- CAPPED PIN FOUND WITH I.D. CAP MARKED SJL INC (UNLESS NOTED)



NO.	ARC	RADIUS	DELTA ANGLE	CHORD BEARING	CHORD
C1	177.23'	2261.83'	04°29'20"	S 84°42'30" E	177.16'

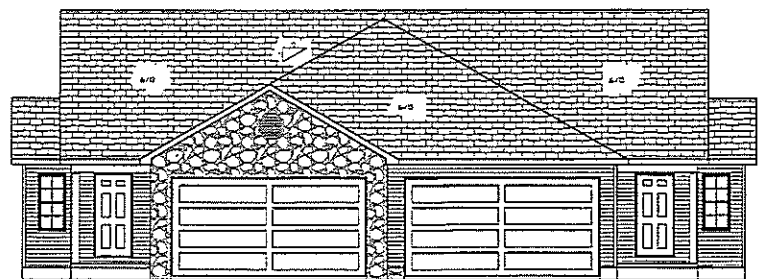
LOT 3682 3.553 AC.  
 PHASE 1 0.522 AC.  
 PHASE 2 0.312 AC.  
 PHASE 3 0.239 AC.  
 PHASE 4 0.525 AC.  
 PHASE 5 0.356 AC.  
 RESIDUE 1.599 AC.



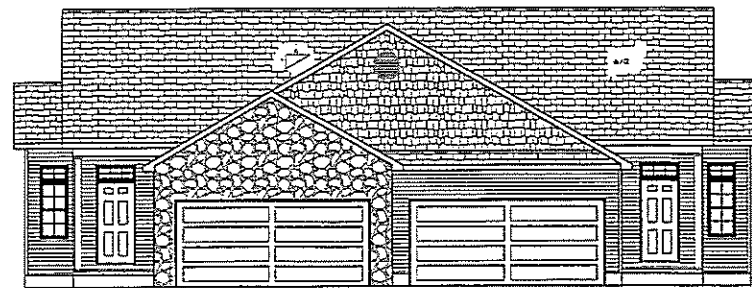
SHAFFER, JOHNSTON, LICHTENWALTER  
 & ASSOCIATES, INC.  
 Consulting Engineers & Surveyors  
 3477 Commerce Parkway, Suite C  
 Wooster, Ohio 44691  
 TEL (330) 345-6377 FAX (330) 345-6725 EMAIL sjl@sjl-inc.com

DRAWN C. Falt	CHECKED	SCALE 1" = 60'	DATE 08/08/16
DWG NO: EW-2343AC		JOB NO: EW-2343AD	
SHEET 2 OF 3			

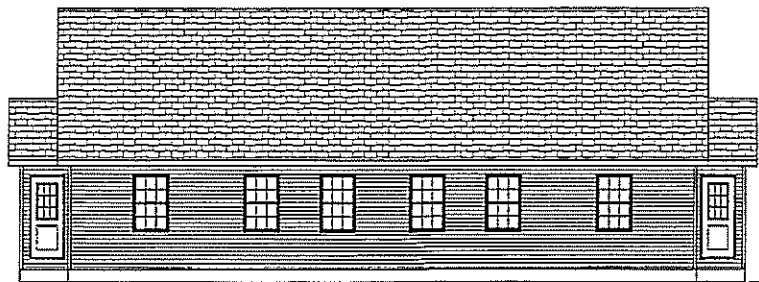
Vol 31 P 315



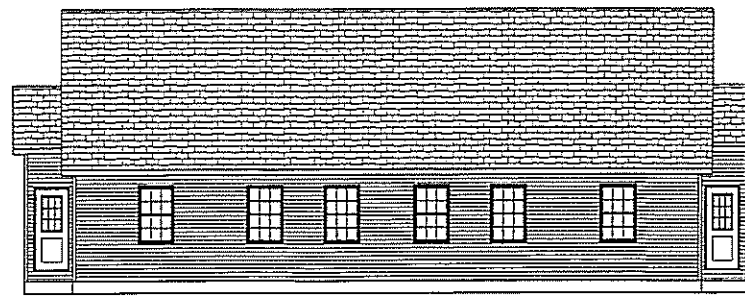
FRONT ELEVATION A



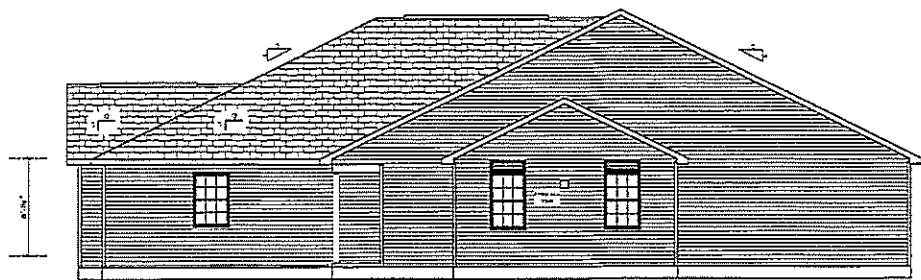
FRONT ELEVATION B



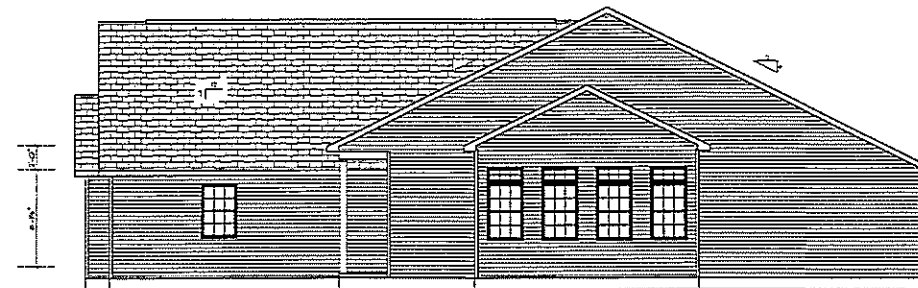
REAR ELEVATION A



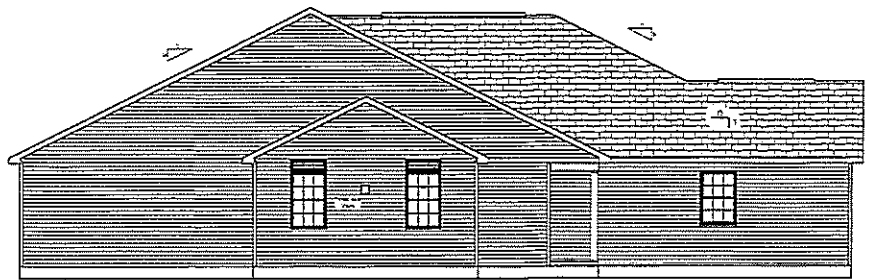
REAR ELEVATION B



RIGHT ELEVATION A



RIGHT ELEVATION B



LEFT ELEVATION A



LEFT ELEVATION B

#2018-4681

# ANDOVER CONDOMINIUMS

PHASE 5

PART OF LOT 3682

ANDOVER ALLOTMENT

PLAT VOL. 29; PG. 36

CITY OF ORRVILLE

WAYNE COUNTY, OHIO



SHAFER, JOHNSTON, LICHTENWALTER & ASSOCIATES, INC.

Consulting Engineers & Surveyors

3477 Commera Parkway, Suite C

Wooster, Ohio 44691

TEL (330) 345-6377 FAX (330) 345-6725 EMAIL sjl@sjl-inc.com

DRAWN C. Felb	CHECKED	SCALE not to scale	DATE 08/08/16
DWG NO: EW-2343AD		JOB NO: EW-2343AD	
			SHEET 3 OF 3