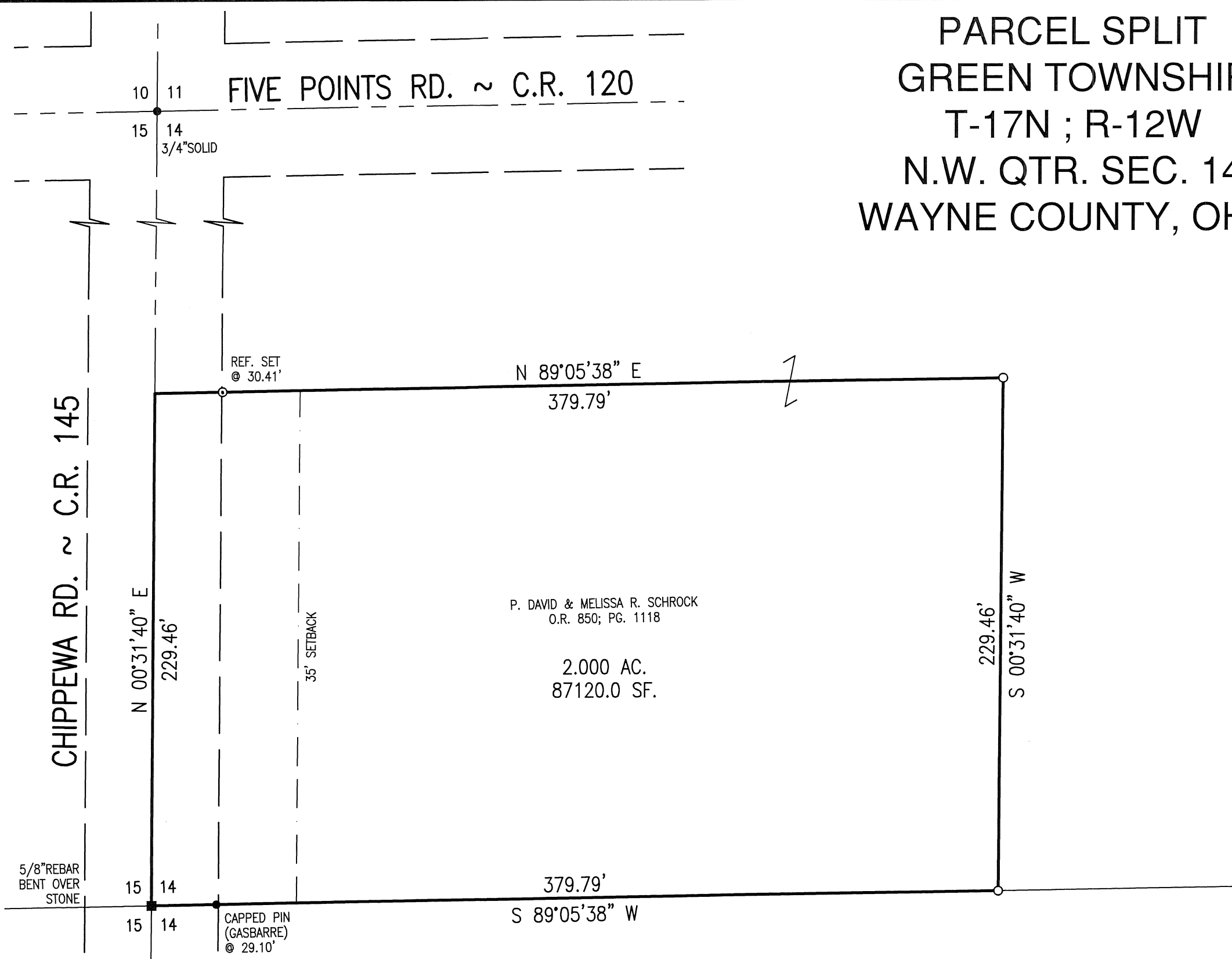


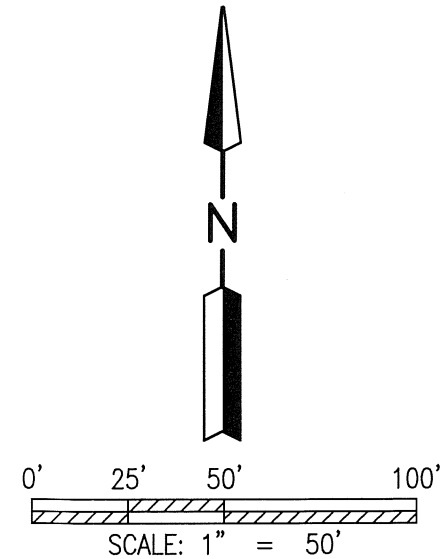
PARCEL SPLIT
GREEN TOWNSHIP
T-17N ; R-12W
N.W. QTR. SEC. 14
WAYNE COUNTY, OHIO



REFERENCE SURVEY:

- 'R'-857
- 'CC'-13
- 'CC'-379
- 'II'-156
- 'TT'-37
- 'UU'-827
- 'W'-742

BASIS OF BEARING:
The bearings as shown hereon are relative to GRID NORTH of the OHIO STATE PLANE COORDINATE SYSTEM, NAD 83 DATUM



- STONE FOUND
- I.P. OR PIPE FOUND
- 5/8" REBAR SET WITH I.D. CAP MARKED SJL INC

P. DAVID & MELISSA R. SCHROCK
O.R. 850; PG. 1118

2.000 AC.
87120.0 SF.


Approved By:

V. Anderson 7-29-19
Wayne County Health Department
Pete Wearstles 7/29/19
Wayne County Planning Department
(App. #M-19-32) *Pete Wearstles*

Distances shown hereon are expressed in feet and decimal parts thereof, bearings are used to express angles only, iron pins or monuments were found or set as indicated hereon. All of which I believe to be correct to the best of my knowledge.

By: *Mark E. Purdy* 7-23-19
Mark E. Purdy, P.S. #7307 Date



 SHAFFER, JOHNSTON, LICHTENWALTER & ASSOCIATES, INC. Consulting Engineers & Surveyors 3477 Commerce Parkway, Suite C Wooster, Ohio 44691 TEL (330) 345-6377 FAX (330) 345-6725 EMAIL sjl@sjl-inc.com			
DRAWN C. Falb	CHECKED	1" SCALE = 50'	DATE 07/17/19
DWG NO: EW-2633-BASE		JOB NO: EW-2633	
			SHEET 1 OF 1